

name:

ROWER

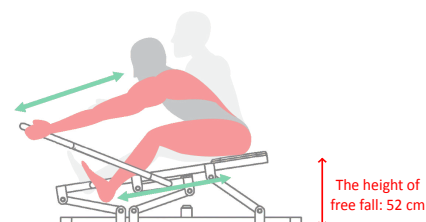
SKU:

TEL015-1

description:

The device strengthens the muscles of the upper and lower limbs using the weight of the exerciser.

working muscles:



dimensions: (L x W x H):

133 x 95 x 85 cm

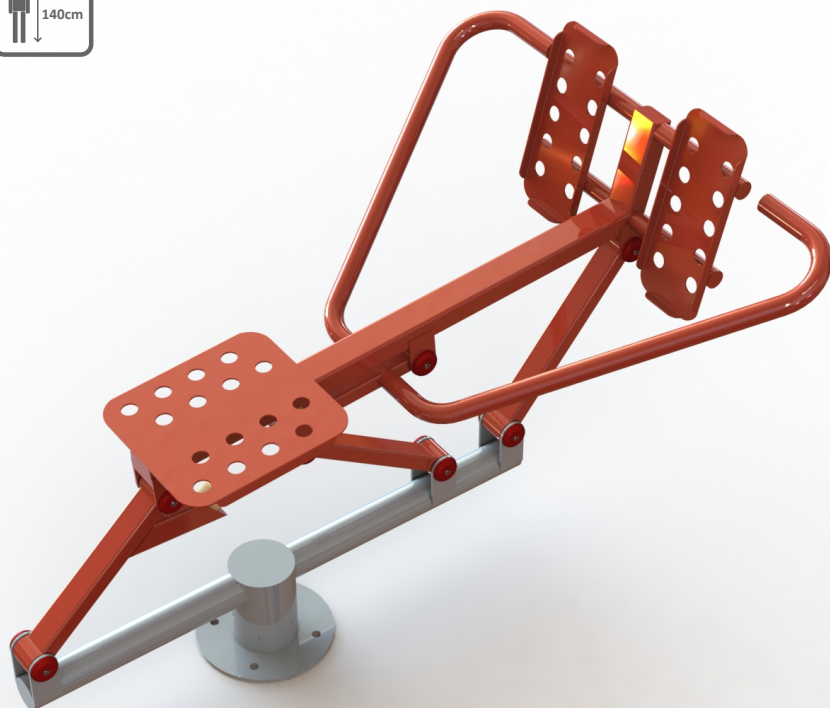
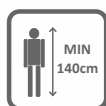
safety zone:

433 x 395 cm

technical specifications:

- Steel pipes, galvanized, min. 3 mm thick
- The diameter of the pipes 33, 38, 42, 60, 90, 114 mm
- Twice powder-coated
- Plastic handles
- Bearings closed, stainless steel screws
- The seat, backrest and perforated treads from black steel; galvanized and powder-coated or from stainless steel, min. 3 mm thick

MAX
160kg



available colors:

(and many others according to RAL)

7040

3020

7040

5003

6005

1015

8016

1015