

**name:**

**ROWER**

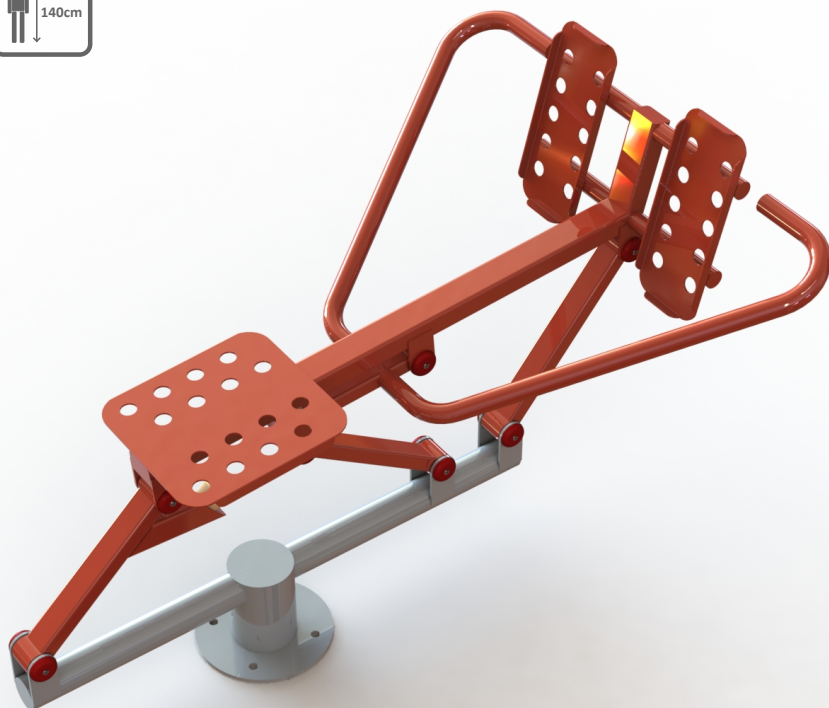
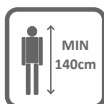
**SKU:**

**TEL015-1**

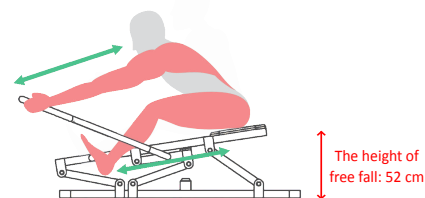
**description:**

The device strengthens the muscles of the upper and lower limbs using the weight of the exerciser.

MAX  
120kg



**working muscles:**



**dimensions: (L x W x H):**

**133 x 95 x 85 cm**

**safety zone:**

**433 x 395 cm**

**technical specifications:**

- Steel pipes, galvanized, min. 3 mm thick
- The diameter of the pipes 33, 38, 42, 60, 90, 114 mm
- Twice powder-coated
- Plastic handles
- Bearings closed, stainless steel screws
- The seat, backrest and perforated treads from black steel; galvanized and powder-coated or from stainless steel, min. 3 mm thick

**available colors:**

(and many others according to RAL)

7040

**3020**

7040

5003

6005

1015

8016

1015