

name:

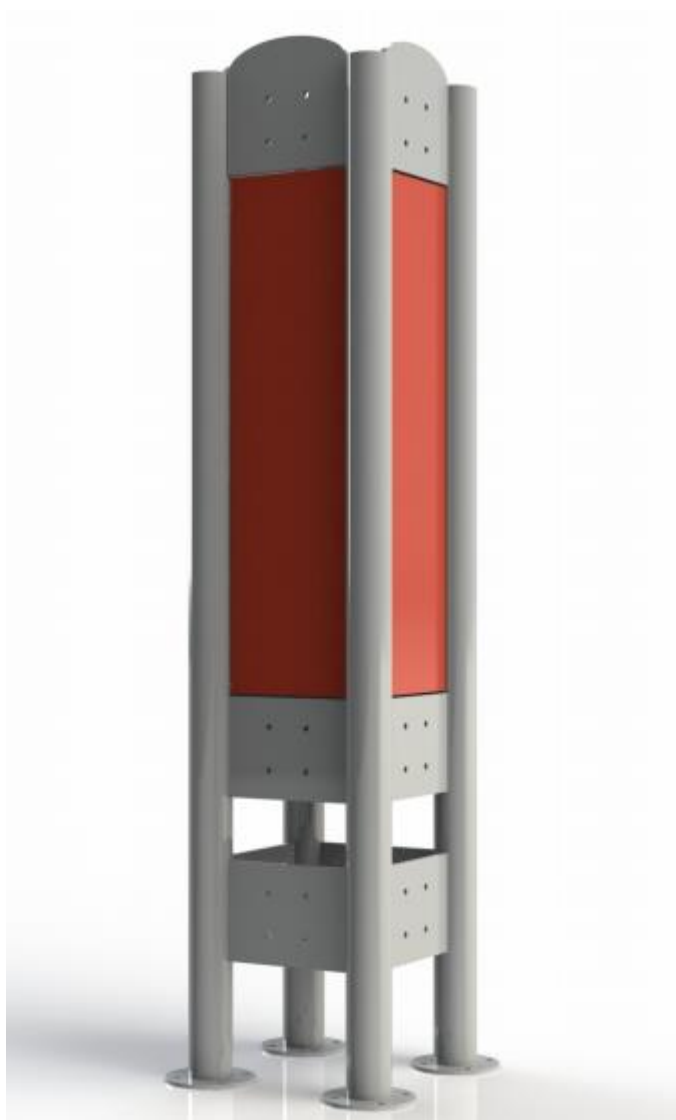
QUADRUPLE PYLON (ATLAS)

SKU:

TEL111-2

description:

Quadruple pylon allows mounting of four devices for exercise. It's a practical solution for lack of space - it saves place at safety zone.



dimensions: (L x W x H):

55 x 55 x 205,5 cm

technical specifications:

- Steel pipes, galvanized, min. 3 mm thick
- The diameter of the pipes 90 mm
- Twice powder-coated
- Stainless steel screws
- INSTRUCTIONS FOR EXERCISES WITH QR CODE AND THE TERMS OF USE ON THE PYLON

available colors:

(and many others according to RAL)

7040

3020

7040

5003

6005

1015

8016

1015